



# BUMBLEBEE

**ATEX WIRELESS SOLUTION FOR  
PRESSURE AND TEMPERATURE  
MONITORING OF YOUR WELLS**

Bumblebee is the turnkey solution for monitoring your production installations in ATEX areas. It automatically and regularly transmits reliable data via LoRa radio technology. Easy to deploy and maintain, it fits easily into your data management system.



## THE MONITORING SOLUTION TO ENHANCE YOUR OPERATIONS



### REMOTE MONITOR THE STATUS OF YOUR WELLS

Instantly view indicators related to your production facilities.



### IMPROVE YOUR DECISION MAKING

Organize your operations based on remote information.



### OPTIMIZE YOUR RESOURCES

Eliminate routine visits to the field, and reduce production shutdowns.

## MONITORING PARAMETERS



PRESSURE

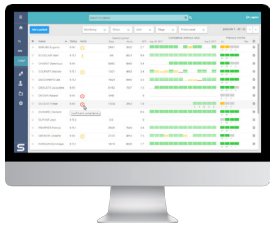


TEMPERATURE



ALERT ON  
THRESHOLD

## THE SOLUTION THAT BRINGS YOU CLOSER TO YOUR ASSETS



### BUMBLEBEE VISION WEB APPLICATION, FOR THE VISUALIZATION OF YOUR WELL DATA

The web application allows users to view operating indicators that improve decision making and coordination. This information is shared among all production and maintenance actors.



### VESTALIS PLATFORM, FOR DATA PROCESSING AND ANALYSIS

The platform manages data from Bumblebee device and other connected equipment. It performs processing for the calculation of indicators and alerts. It guarantees a high level of security for data storage and data access.



### BUMBLEBEE DEVICE, LIGHTWEIGHT AND LOW MAINTENANCE

Bumblebee is an ATEX certified battery-powered device that is easy to deploy. It measures pressure and temperature and transmits this data via any LoRaWAN networks.

## TECHNICAL SPECIFICATIONS

### VESTALIS FOR BUMBLEBEE

- System management
- Device provisioning
- Real time calculation of indicators
- Algorithm & web application hosting
- Data and user credentials management
- Secure API with OAuth 2.0

### BUMBLEBEE DEVICE

- Measuring ranges:
  - Temperature up to 200°C
  - Pressure up to 10k Psi
- Radio: LoRaWAN and BLE
- Battery life: 5 years (12 acquisition/day)
- IP65 and ATEX zone 1 certified